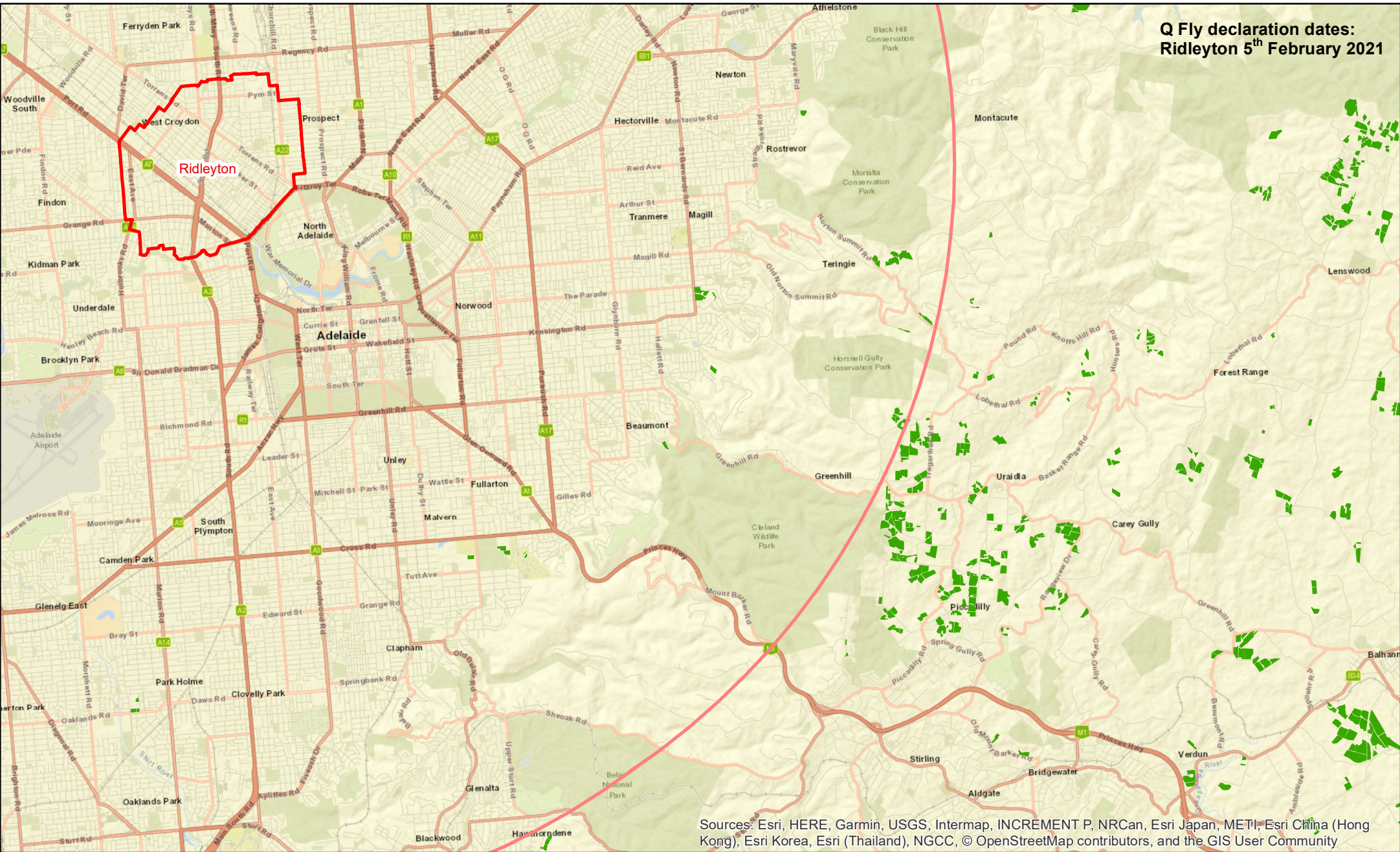


Q Fly declaration dates:
Ridleyton 5th February 2021

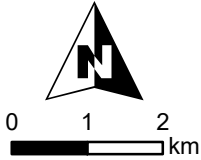


Sources: Esri, HERE, Garmin, USGS, Intermap, INCREMENT P, NRCan, Esri Japan, METI, Esri China (Hong Kong), Esri Korea, Esri (Thailand), NGCC, © OpenStreetMap contributors, and the GIS User Community

DATUM: GDA94
PROJECTION: MGA54
DATE: 22nd December 2021
SOFTWARE: ESRI ArcGIS v10.8.1
DATA SOURCE:
Vineyard Block - Vinehealth Australia
Outbreak Area - PIRSA
Suspension Area - PIRSA

- Legend**
- ▭ Q Fly Outbreak Area
 - ▭ Q Fly Suspension Area
 - ▭ Vineyard Block

Qfly Outbreak Metropolitan Adelaide



DISCLAIMER: Although every effort has been made to ensure the accuracy of the information displayed, Vinehealth make no representations, either express or implied, that the information displayed is accurate or fit for any purpose and expressly disclaims all liability for loss or damage arising from reliance upon the information displayed.