

# Boundary extension to the Maroondah PIZ

Industry Notice April 2023

## *The Maroondah Phylloxera Infested Zone (PIZ) proposed boundary extension*

### PROPOSED BOUNDRY EXTENSION

In response to new phylloxera detections in the Yarra Valley Geographic Indicator, the current position of the Maroondah PIZ boundary will be extended. In accordance with the National Phylloxera Management Protocols, a 5 km buffer zone has been established around the new detection, which has incorporated additional properties in the proposed extended Maroondah PIZ (additional properties shown in red in Diagram 1).

Agriculture Victoria is now working in partnership with those agriculture and horticulture businesses affected by the redrawing of the boundary position to determine any long-term market access impacts.

### ACTION TAKEN BY AGRICULTURE VICTORIA

In response to new phylloxera detections affecting the boundary of the PIZ:

- Issued an Infested Lands Notice to the property owners affected by phylloxera to restrict the movement of host materials from their vineyards.
- Advised the Yarra Valley Wine Growers Association (YVWGA), Wine Victoria and Nursery and Garden Industry of Victoria (NGIV) and confirmed their support to facilitate discussions with affected producers.
- Advised interstate biosecurity agencies of the detections and planned actions regarding the establishment of an expanded PIZ in accordance with the National Phylloxera Management Protocol.

### INFORMATION FOR GROWERS

Grape growers are reminded to enact good practice on-farm biosecurity measures to help mitigate the threat of phylloxera spreading to their vineyards.

These measures include:

- Reminding visitors to use footbaths before entering the vineyard.
- Ensuring contract staff disinfest equipment and clothing and park vehicles outside of vineyards.
- Ensuring all viticultural machinery is cleaned prior to entering the vineyard.

If your vineyard or nursery is situated within the proposed expansion then your business will be subject to controls and movement conditions associated with a PIZ, which are explained on the Agriculture Victoria website:

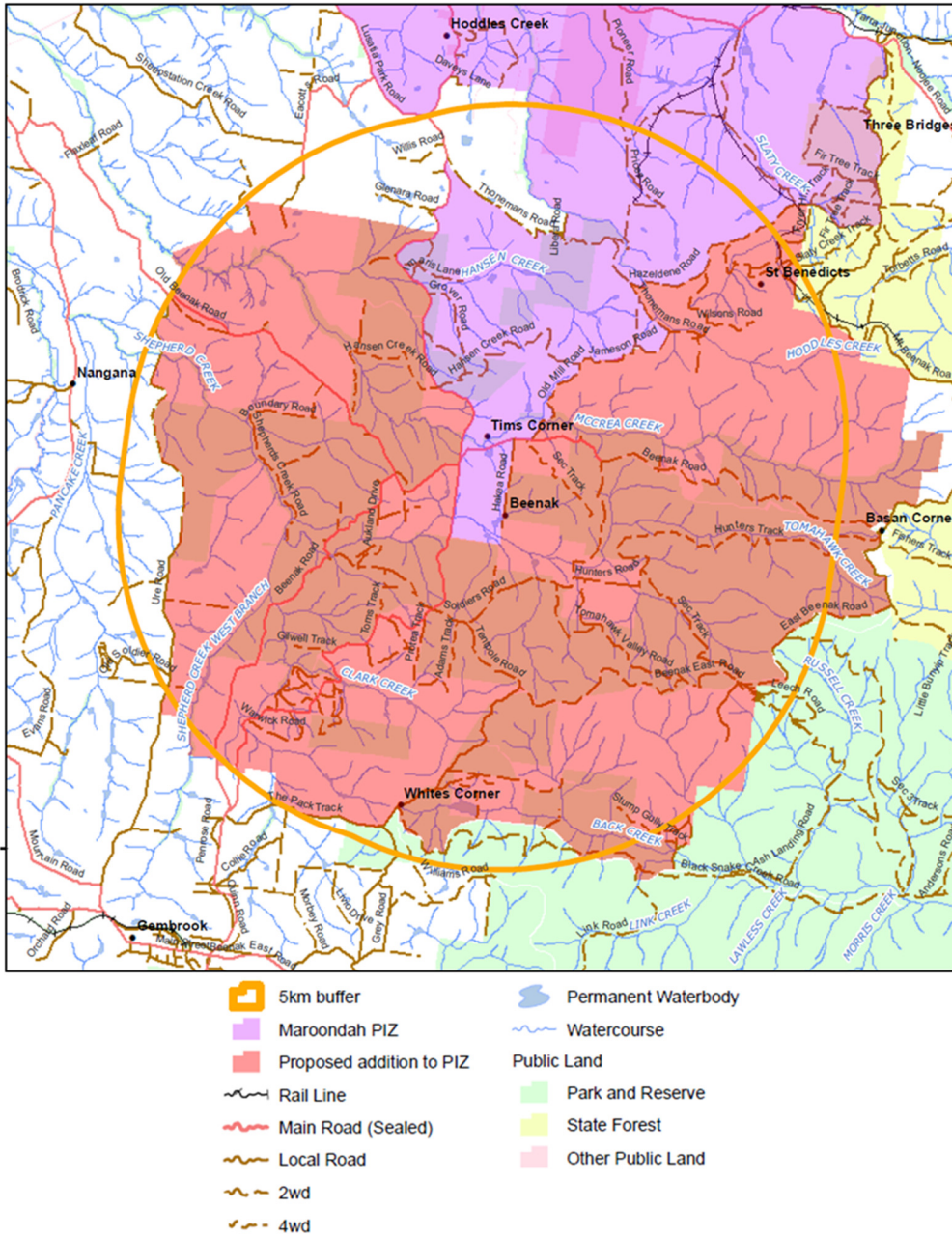
[www.agriculture.vic.gov.au/biosecurity/protecting-victoria/victorian-viticulture-biosecurity/compliance-movement-conditions](http://www.agriculture.vic.gov.au/biosecurity/protecting-victoria/victorian-viticulture-biosecurity/compliance-movement-conditions).

### NEXT STEPS

Agriculture Victoria will provide regular updates to the wine grape growing industry in the region via the YVWGA on this issue and on any further phylloxera detections in the region.

Agriculture Victoria will work with the YVWGA, Wine Victoria and NGIV to provide businesses in both industries with access to information required to better manage the impact of phylloxera on their market access needs.

DIAGRAM 1: PROPOSED PIZ BOUNDARY CHANGE



**ADDITIONAL INFORMATION**

Phylloxera is a notifiable pest under section 5(1) of the *Plant Biosecurity Act 2010*. If you suspect phylloxera is present on your vineyard, please notify Agriculture Victoria by emailing [market.access@agriculture.vic.gov.au](mailto:market.access@agriculture.vic.gov.au).

For more information on phylloxera and its management, please refer to [www.agriculture.vic.gov.au/biosecurity/protecting-victoria/victorian-viticulture-biosecurity](http://www.agriculture.vic.gov.au/biosecurity/protecting-victoria/victorian-viticulture-biosecurity).