

Detection of phylloxera at St Andrews

Industry Notice 28 February 2019

AGRICULTURE VICTORIA

An infestation of grapevine phylloxera has been detected at St Andrews in a Victorian Phylloxera Risk Zone.

BACKGROUND TO THE DETECTION

In February, a commercial wine grape grower reported a suspect occurrence of a phylloxera infestation on a commercial vineyard located at St Andrews.

ACTION TAKEN BY AGRICULTURE VICTORIA

Since the report Agriculture Victoria has;

- Collected a sample from the St Andrews vineyard and confirmed its identification through diagnostic analysis.
- Confirmed the strain of phylloxera to be "G1" – which aligns to the single strain also known to be in the nearby Maroondah Phylloxera Infested Zone.
- Issued an Infested Lands Notice to the property owner to restrict the movement of host material from the vineyard until a longer-term plan can be established.
- Advised the Yarra Valley Wine Growers Association (YVWGA) and confirmed their support to facilitate discussions with affected growers and businesses.
- Advised interstate biosecurity agencies of the detection and planned actions regarding establishment of a Phylloxera Infested Zone in accordance with the National Phylloxera Management Protocol.

INFORMATION FOR GROWERS

Grape growers are reminded to enact on-farm biosecurity measures to help mitigate the threat of phylloxera establishing on their vineyards.

These measures include:

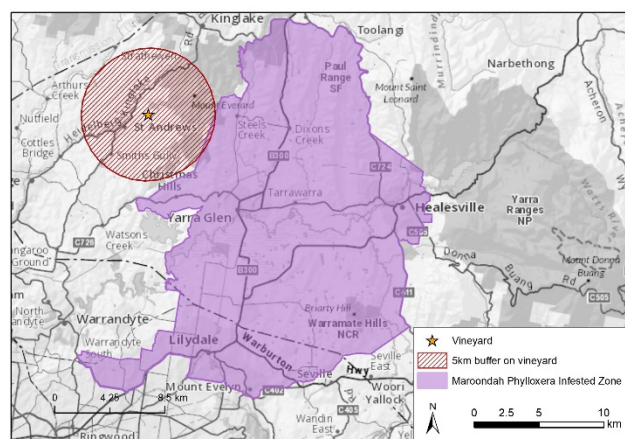
- Reminding visitors to use footbaths before entering the vineyard.
- Ensuring contract staff disinfest equipment and clothing and park vehicles outside of vineyards.
- Ensuring all viticultural machinery has been cleaned and, preferably, heat treated prior to entering the vineyard.

NEXT STEPS

- Agriculture Victoria is in consultation with the YVWGA regarding long-term options for the management of phylloxera within the Yarra Valley region.
- Agriculture Victoria will be providing regular updates to industry via the YVWGA on this issue and on any further phylloxera detections in the region.
- Agriculture Victoria will be working with the YVWGA to engage industry and provide producers with access to information required to better manage biosecurity threats at the farm gate.

MANDATORY REPORTING

Report all suspected phylloxera detections by contacting 136 186 or emailing market.access@ecodev.vic.gov.au



PHYLLOXERA HOST MATERIAL MOVEMENT CONDITIONS FOR MOVEMENT OUT OF A PHYLLOXERA INFESTED ZONE (PIZ) INTO ANOTHER PIZ

Whole wine grapes

Prohibited unless permitted by Agriculture Victoria to do so and consigned under the following conditions:

- packed in bins cleaned free of soil and plant material before delivery; and
- loaded into transport vehicles on a hard surface (not within the vineyard); and
- bins are not filled within 200mm of the top; and
- bins are securely covered; and
- transported via an approved route; and
- having an emergency response plan approved by an inspector, for handling spillages; and
- accompanied by a permit issued by Agriculture Victoria.

Must and unfiltered juice

Prohibited unless permitted by Agriculture Victoria to do so and consigned under the following conditions:

- in the case of **whole must**, be prepared from de-stemmed crushed grapes; and
- in the case of **juice**, be prepared from crushed grapes; and
- consigned in sealed tankers or containers, cleaned free of soil and organic matter; and
- transported via an approved route; and
- having an emergency response plan approved by an inspector, for handling spillages; and
- accompanied by a permit issued by Agriculture Victoria.

FOR MOVEMENT FROM A PIZ TO A PHYLLOXERA RISK ZONE (PRZ) OR PHYLLOXERA EXCLUSION ZONE (PEZ)

Must and unfiltered juice

Prohibited unless permitted by Agriculture Victoria to do so and consigned under the following conditions:

Consignor requirements:

- as per PIZ conditions; or
- accompanied by a Plant Health Declaration issued by business accredited under ICA-22.

Consignee requirements:

- consignment accompanied by either a permit issued by Agriculture Victoria, or a Product Movement Declaration issued by an ICA-22 accredited business; and
- the receiving business must be accredited under ICA-22; or
- the business must be inspected by Agriculture Victoria and found to have suitable systems in place for receipt of must or juice including:
 - a dedicated unloading area;
 - signage indicating dedicated roadways and no-entry areas;
 - waste disposal procedures;
 - spill control procedures.

Marc

Prohibited unless permitted by Agriculture Victoria to do so and consigned under the following conditions;

- has undergone fermentation for at least four days; or
- has been composted for at least 3 months -
 - at least 500 m from grapevines; or
 - located in a secure, segregated location; and
- consigned in sealed tankers or containers, cleaned free of soil and organic matter; and
- be accompanied by a permit issued by Agriculture Victoria.

Cuttings, rootlings, and potted vines

Movement of cuttings, rootlings and potted vines is prohibited from a PIZ.

Soil

Movement of soil is prohibited, except in small quantities obtained for diagnostic or research purposes (refer to conditions for diagnostic samples below).

Diagnostic samples and germplasm

Movement of diagnostic samples and germplasm can only occur under conditions stipulated in a permit issued by Agriculture Victoria.

Agricultural equipment, bins and packages

Prohibited unless permitted by Agriculture Victoria to do so and consigned under the following conditions;

- thoroughly cleaned with a steam cleaner or with high pressure hot water to remove all soil and plant debris; and
- disinfested by:
 - steam applied at a temperature above 100°C, as measured at the steam outlet; or
 - immersion in hot water (>70°C) for at least 2 minutes at temperature, or
 - placing in a hot room at a temperature of 45°C for at least 90 minutes or at a temperature of 40°C for at least 180 minutes; and
- accompanied by a Plant Health Certificate, or a Plant Health Declaration issued by an Agriculture Victoria approved person.

FURTHER INFORMATION

For more information, please contact your local Agriculture Victoria Plant Standards Officer by telephone on 136 186 or email: market.access@ecodev.vic.gov.au