

SA Winegrape Crush Survey State Summary Report - 2014



Explanations and Definitions

INTAKE (CURRENT VINTAGE) DATA

Definition of regions

Regions have been defined in accordance with Geographical Indication (GI) boundaries. If a GI region has not been declared, or produces less than 5,000 tonnes, then the data is aggregated into the relevant GI zone. Disaggregation of data into smaller regions such as Southern Fleurieu and Mount Benson is available on request from the Board's office.

Total crush

The **total crushed** is the total tonnes of grapes crushed from a particular source region, whether processed in that region, another region in SA or interstate. All wineries in Australia that are known to source fruit from South Australian vineyards are included in the survey collection process. However, not all wineries submit a survey form - therefore the total tonnage reported may underestimate the true crush. An estimate of the non-response rate for each region is provided below each intake summary report. Reported fruit is separated into fruit produced from the winery's own or associated vineyards ("own grown") and from independent vineyards ("purchased").

Crop value data

On the survey forms, wineries are asked to record **total purchase value**. This is the total amount paid for fruit of a particular variety at the point of receipt – NOT including freight. It includes any penalties or bonuses (eg Baumé) applied at the weighbridge, but DOES NOT INCLUDE other bonuses or adjustments such as end use quality bonuses, which are not available at the time the survey is conducted.

The **calculated average purchase value per tonne** is the average amount paid per tonne of fruit across all wineries. Winery grown grapes are not included in the calculation of average purchase value; nor are grapes grown by companies connected with the winery or under lease arrangements. The **estimated total value of purchased grapes** is calculated by multiplying the average purchase value per tonne by the total tonnes purchased. The **estimated total value of total grapes** is calculated by multiplying the average purchase value per tonne by all tonnes crushed. If there is a variety where there are no purchases, then the average purchase value across all other varieties of the same colour in the same region is used to determine an estimated value for the own grown grapes.

Note: in small varieties there may sometimes be only one winery contributing towards a calculated average purchase value per tonne.

Important note on average purchase value

There is considerable variation in the pricing arrangements made by different wineries. For example, some wineries make adjustment payments based on the average value per tonne reported in this survey and some pay quality bonuses based on the end use of the product. These additional payments are not included in the reported figures. The average price also does not give any indication of the distribution of prices, or variables that go into individual contracts. Therefore the average price should not be compared directly with an individual grower's arrangement.

Highest and lowest price

Wineries are asked to report the highest and lowest prices paid for any parcel of fruit of a particular variety, of any size. The highest of all highest prices, and the lowest of all lowest prices are reported – provided that at least three wineries have provided this information for any particular variety. *Note: the highest or lowest price may be for a very small parcel of fruit - and/or reflect an unusual pricing arrangement - eg payment by the hectare rather than per tonne, "spot market" sales of excess fruit etc.*

FORECASTS

Estimated supply and committed intake

The estimated supply and committed intake report has been removed from the 2014 Winegrape Crush Survey. It has been identified that the methodology used to determine the estimated supply requires review.

To assist industry stakeholders gain an understanding of state and regional estimated supply, the last 5 years actual total tonnes crushed at the state level and each region has been averaged. A range is then provided using the highest and lowest figures from the actual tonnes crushed.

The estimated committed intake is the amount of fruit that wineries are already committed to take in, for 2015. It is made up of winery grown fruit and contract purchases. Only existing or ongoing contracts are included – not intended future signings or renewals.

Explanations and Definitions cont.

PLANTING DATA

Derivation of planting data tables

Planting data is **not** derived from the 2014 South Australian Crush Survey of wineries. The information is obtained from the vineyard register maintained by the Phylloxera and Grape Industry Board of South Australia.

The Board is required under the *Phylloxera and Grape Industry Act 1995* to maintain a complete and accurate register of grapegrowers in the state. All vineyard owners with more than 0.5 hectares are required by law to register with the Board, and to complete an accurate vineyard return each year, giving details of their plantings. This information is kept strictly confidential. An accurate vineyard register enables the Board to produce complete, up-to-date statistical information on vineyard plantings by variety, year planted and location.

For more information on registration of vineyards, please contact the Phylloxera and Grape Industry Board office on 08 8362 0488.

Explanatory notes for planting data tables

1. Planting data tables are current as at April 2014 and include all plantings from the 2013 planting season. Vines planted in a particular year may include topworked or replaced vines, as well as new plantings in virgin ground. Where vines have been replaced or topworked, the old variety record is removed. This explains why the area planted for earlier years may be different in the 2013 report compared with previous reports.
2. Vineyard plantings are recorded by Geographical Indication. Planting details for smaller regions not included in the survey report are available on request from the Board.
3. Where a zero (0) appears in a table, this may indicate the presence of a planting of less than 0.5 hectares, or it may indicate zero plantings. Rounding may produce a slight error in totals or percentages.

State and Regional overview

The total crush of South Australian winegrapes in 2014 was 706,017 tonnes. This is an increase for the third consecutive year in a row, with 5,492 tonnes (0.8%) above the 2013 harvest of 700,525 tonnes. There was an estimated non-response rate of 2.0% across the state.

The top three regions are – the Riverland 61.8% (436,378 tonnes crushed), Langhorne Creek 6.9% (48,639 tonnes crushed) and Barossa Valley 6.2% (43,775 tonnes crushed).

The Riverland increased its production by 10.1% on the 2013 vintage, followed closely by the Clare Valley which is up by 10%, Langhorne Creek up by 3.6%, and the Barossa Valley increased production by 2.6%. In other regions, difficult conditions around flowering/berry set resulted in decreases in yields for the Adelaide Hills by 37.4% and McLaren Vale down by 6.1%. The regions in the South East also saw a decrease in production, with Coonawarra down by 31.5%, Padthaway down by 8.5% and Wrattenbully down by 7.1%.

The total estimated purchase value of the crush was \$423 million, down by \$51 million (10.7%) from 2013. The average purchase value per tonne across the state decreased on 2013 figures by 15.3% (down by \$100 per tonne) to \$552 per tonne.

The average purchase values for all the major varieties decreased on the 2013 values, compared with increases in 2012.

Of the red varieties – Shiraz is down by \$75 per tonne to \$725 per tonne, Cabernet Sauvignon down by \$114 per tonne to \$638 per tonne and Merlot is down by \$92 per tonne to \$495 per tonne. Of the white varieties – Chardonnay is down by \$88 per tonne to \$297 per tonne, Colombard down by \$34 per tonne to \$197 per tonne and Sauvignon Blanc down by \$71 per tonne to \$602 per tonne.

Following the 2013 vintage, which was summed up as producing well-balanced, good quality fruit; the 2014 vintage will be remembered for its late finish, with good winter rains and low pest and disease pressures. The fruit ripened slowly, thus delaying harvest intake, which has consequently delivered strong quality fruit with excellent flavour, dense colours with good structure and character.

Varietal overview

The red crush produced 429,982 tonnes, up from 2013 by 4.1% (17,126 tonnes); whilst the white crush production decreased by 4% (11,634 tonnes) to 276,035 tonnes crushed.

Of the red varieties, Shiraz accounted for 21.3% (150,412 tonnes) of the crush, with Cabernet Sauvignon at 11.9% (84,305 tonnes) and Merlot at 4.1% (29,096 tonnes). Among the white varieties, Chardonnay accounted for 16.4% (115,994 tonnes) of the production, with Muscat Gordo Blanco at 3.5% (25,047 tonnes), Colombard at 3.4% (23,813 tonnes) and Sauvignon Blanc at 3.2% (22,356 tonnes).

Across all varieties, the proportion of purchased versus winery grown fruit is slightly up on the 2013 vintage of 72%, to 74%.

Vineyard plantings

Planting data derived from the Phylloxera and Grape Industry Board's vineyard register shows that there were 76,156 hectares planted to vines in South Australia as at 30 April 2014. This represents a net decrease in the total area of 377 hectares (0.5%) since April 2013, compared to decreases in 2011 of 557 hectares and 1,600 hectares in 2010.

There was a total of 536 hectares (<1% of the total area) planted in spring 2013 (including top-working and replacements) compared with 659 hectares planted in 2012. Of the new plantings, red varieties accounted for 92.5% compared with white varieties at 7.3%. In 2013, the top 3 most planted red varieties were – Shiraz (250 ha), Cabernet Sauvignon (168 ha) and Merlot (15 ha); with the top 2 most planted white varieties being - Chardonnay (11 ha) followed by Muscat Gordo Blanco (6 ha).

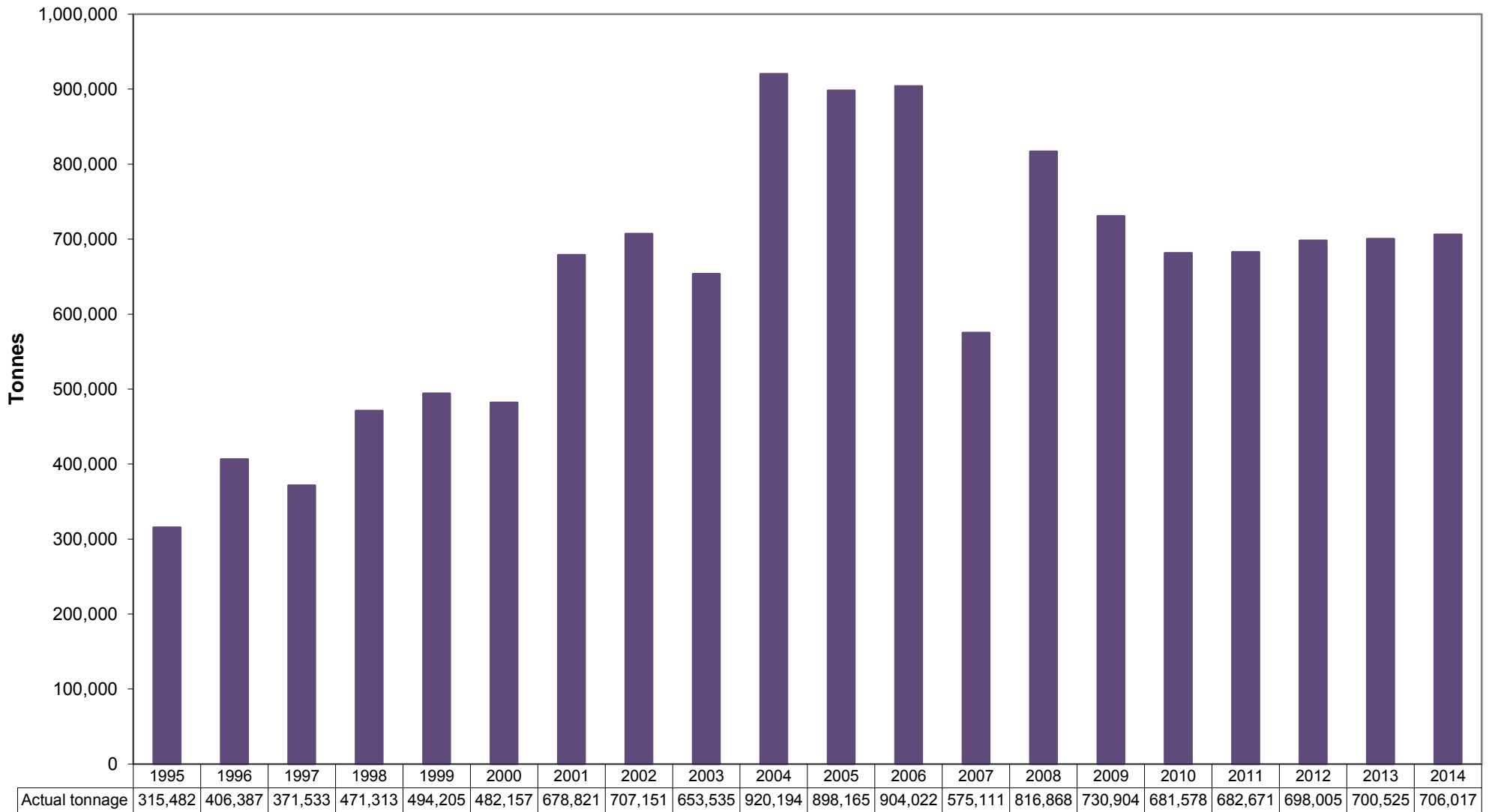
There were a total of 3,443 growers registered with the Board as at 30 April 2014. 2,040 growers (59.2%) have properties smaller than 10 hectares and account for 11.6% of the total vineyard area, while 127 growers (3.7%) have properties larger than 100 hectares (in the same region) and account for 39% of the vineyard area.

Comparison to the 5 year average

Over the last 5 years, the average State production was 698,736 tonnes, with a low of 681,576 tonnes in 2010 and a high of 730,904 tonnes in 2009. The 2014 crush is up by 1% against the last 5 year average. For 2015, the estimated committed intake is 671,924 tonnes.

State summary

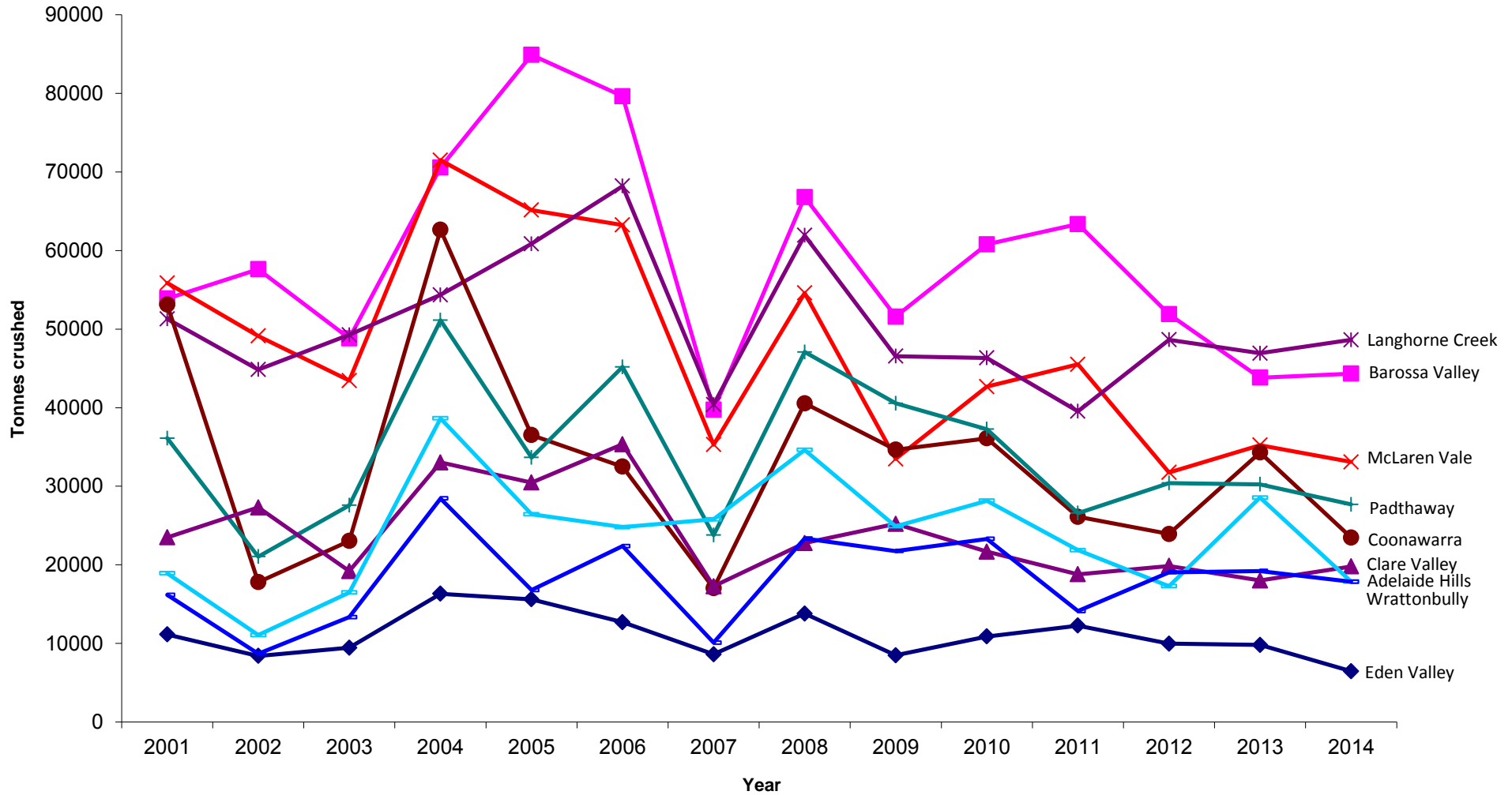
Historical grape crush 1995 - 2014



State summary

Vintage by region 2001 - 2014

Not including the Riverland



State summary

Total crush by GI region 2014 vs 2013

GI region	<i>Winery grown (tonnes)</i>	<i>Purchased (tonnes)</i>	<i>Total crushed 2014</i>	<i>% of state crush</i>	<i>Total crush 2013</i>	<i>% difference 2014 vs 2013</i>
Adelaide Hills	3,768	14,106	17,873	3%	28,559	-37%
Adelaide Plains	756	3,604	4,360	1%	3,870	13%
Barossa Valley	16,496	27,279	43,775	6%	42,662	3%
Barossa Zone - other	381	180	561	0%	1,163	-52%
Bordertown	3,096	-	3,096	0%	4,214	0%
Clare Valley	9,532	10,264	19,796	3%	17,999	10%
Coonawarra	16,325	7,156	23,480	3%	34,300	-32%
Currency Creek	1,146	6,124	7,269	1%	10,032	-28%
Eden Valley	3,456	3,004	6,460	1%	9,802	-34%
Fleurieu zone - other	21	1,720	1,741	0%	1,884	-8%
Kangaroo Island	73	90	163	0%	260	-37%
Langhorne Creek	18,593	30,046	48,639	7%	46,930	4%
Limestone Coast zone - other	639	5,927	6,566	1%	8,652	-24%
Lower Murray zone - other	-	2,236	2,236	0%	2,113	6%
McLaren Vale	13,868	19,224	33,092	5%	35,229	-6%
Mount Benson	315	940	1,255	0%	2,076	-40%
Mount Gambier	30	645	675	0%	564	0%
Mount Lofty Ranges zone - other	77	51	128	0%	112	14%
Padthaway	7,677	20,008	27,685	4%	30,241	-8%
Riverland	76,977	359,401	436,378	62%	396,199	10%
Robe	1,015	121	1,136	0%	3,055	-63%
Southern Fleurieu	52	912	964	0%	687	40%
Southern Flinders Ranges	255	340	594	0%	527	13%
The Peninsulas	62	187	249	0%	189	31%
Wrattonbully	9,255	8,590	17,845	3%	19,206	-7%
Total all regions	183,862	522,154	706,017	100%	700,525	1%

State summary

Vintage Summary by region 2014

Region	Colour	Total Winery Grown	Total purchased	Total crushed	Estimated value of purchased grapes	Estimated value of total crush
Adelaide Hills	Red	967	4,869	5,836	\$6,797,556	\$8,196,142
	White	2,800	9,237	12,037	\$11,372,875	\$14,777,053
	All	3,768	14,106	17,873	\$18,170,431	\$22,973,195
Adelaide Plains	Red	667	2,639	3,305	\$2,039,329	\$2,523,461
	White	89	966	1,055	\$675,136	\$737,939
	All	756	3,604	4,360	\$2,714,466	\$3,261,400
Barossa Valley	Red	14,476	22,116	36,591	\$36,627,597	\$61,217,365
	White	2,402	5,344	7,745	\$3,386,711	\$4,950,419
	All	16,877	27,459	44,336	\$40,014,308	\$66,167,784
Clare Valley	Red	6,037	5,884	11,921	\$6,963,636	\$14,235,653
	White	3,495	4,380	7,875	\$4,127,060	\$7,463,905
	All	9,532	10,264	19,796	\$11,090,696	\$21,699,558
Coonawarra	Red	14,098	6,671	20,769	\$10,133,524	\$30,980,469
	White	2,227	485	2,712	\$366,527	\$2,115,993
	All	16,325	7,156	23,480	\$10,500,051	\$33,096,462
Currency Creek	Red	929	5,146	6,075	\$4,136,003	\$4,876,849
	White	217	978	1,194	\$568,132	\$698,672
	All	1,146	6,124	7,269	\$4,704,135	\$5,575,521
Eden Valley	Red	1,531	1,070	2,601	\$2,097,024	\$4,897,755
	White	1,925	1,934	3,858	\$2,078,086	\$4,215,543
	All	3,456	3,004	6,460	\$4,175,111	\$9,113,299
Fleurieu zone - other	Red	77	1,631	1,709	\$1,290,036	\$1,357,788
	White	69	1,091	1,160	\$771,267	\$821,591
	All	146	2,722	2,869	\$2,061,303	\$2,179,379

State summary

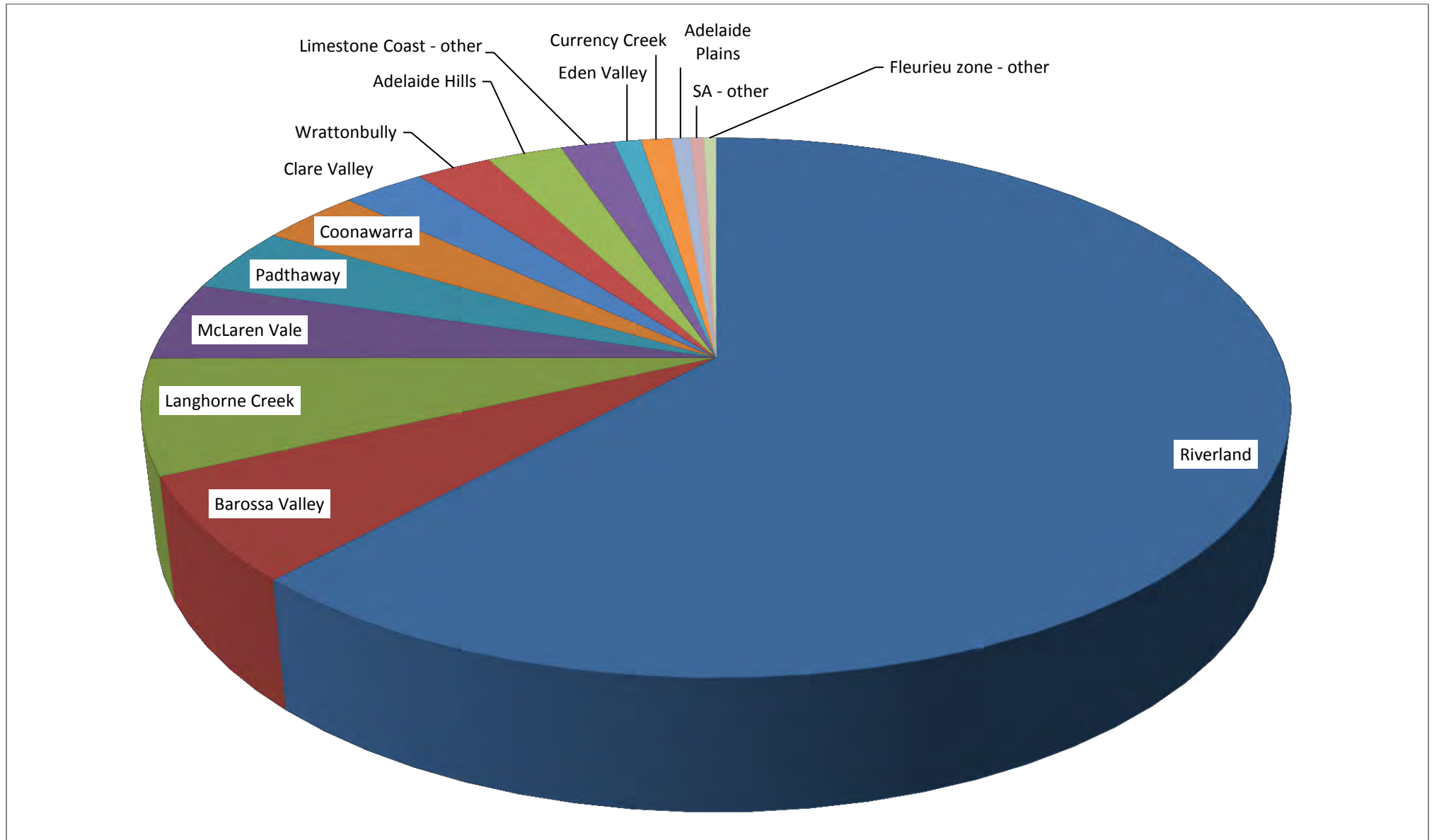
Vintage Summary by region 2014

Region	Colour	Total Winery Grown	Total purchased	Total crushed	Estimated value of purchased grapes	Estimated value of total crush
Langhorne Creek	Red	15,937	23,907	39,844	\$19,555,065	\$32,351,407
	White	2,656	6,139	8,795	\$3,354,343	\$4,839,523
	All	18,593	30,046	48,639	\$22,909,408	\$37,190,929
Limestone Coast zone - other	Red	3,575	6,294	9,869	\$3,912,016	\$6,068,201
	White	1,519	1,339	2,858	\$1,040,584	\$2,041,790
	All	5,095	7,633	12,728	\$4,952,599	\$8,109,990
McLaren Vale	Red	12,232	17,252	29,484	\$26,192,827	\$44,467,420
	White	1,635	1,973	3,608	\$1,522,978	\$2,804,096
	All	13,868	19,224	33,092	\$27,715,804	\$47,271,516
Padthaway	Red	4,012	10,916	14,928	\$9,114,992	\$12,413,533
	White	3,665	9,092	12,757	\$5,844,991	\$8,313,831
	All	7,677	20,008	27,685	\$14,959,983	\$20,727,364
Riverland	Red	48,325	181,991	230,316	\$61,583,580	\$77,785,827
	White	28,651	177,410	206,061	\$42,002,931	\$49,146,172
	All	76,977	359,401	436,378	\$103,586,512	\$126,931,999
SA - other	Red	369	2,005	2,374	\$1,109,885	\$1,325,048
	White	24	808	832	\$243,933	\$250,980
	All	393	2,813	3,206	\$1,353,818	\$1,576,028
Wrattonbully	Red	7,694	6,666	14,360	\$6,938,261	\$14,801,913
	White	1,561	1,925	3,486	\$1,468,948	\$2,640,498
	All	9,255	8,590	17,845	\$8,407,210	\$17,442,411
All winegrapes		183,862	522,154	706,017	\$277,315,834	\$423,316,836

Note: The "estimated value of total crush" is the value estimate from the tonnage and price for all varieties in each region.

State summary

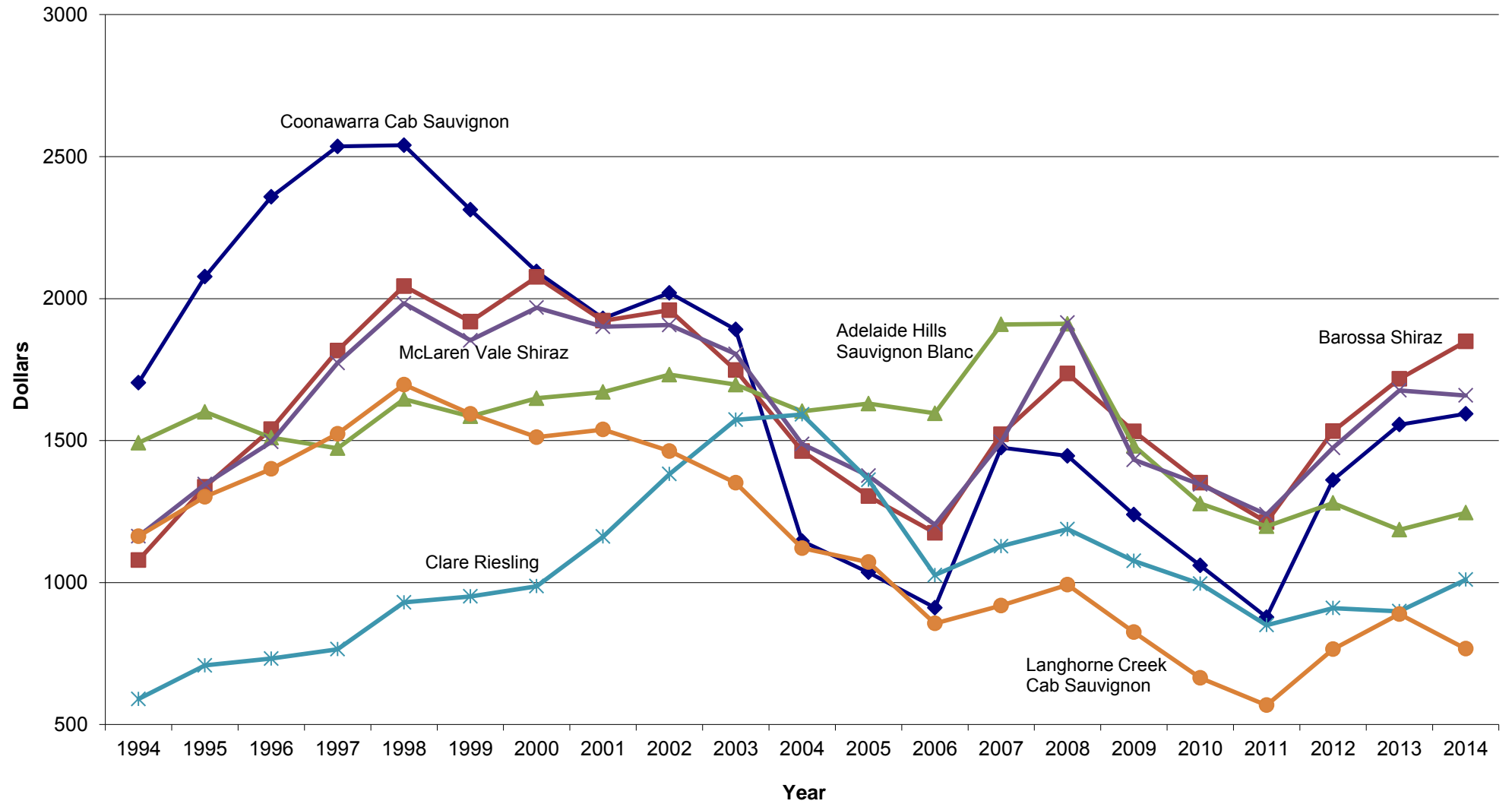
Crush by region pie chart



State summary

Historical weighted average prices

Major variety-region combinations

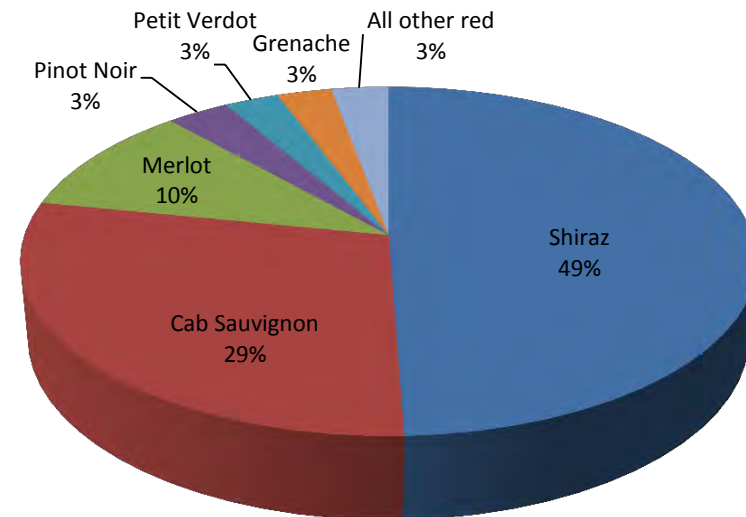


State summary

Vintage summary by variety 2014

Red winegrapes

Variety	Tonnes purchased	Winery grown fruit	Total crushed	% purchased	Est total value of crush
Red winegrapes					
Cabernet Franc	410	157	566	72%	\$408,044
Cabernet Sauvignon	84,305	39,124	123,429	68%	\$78,808,702
Grenache	7,950	3,936	11,886	67%	\$8,488,012
Malbec	1,073	381	1,454	74%	\$1,239,489
Mataro	3,262	556	3,818	85%	\$2,312,326
Merlot	29,096	14,999	44,095	66%	\$21,842,901
Nebbiolo	21	61	82	26%	\$109,570
Other red	1,502	835	2,337	64%	\$1,949,241
Petit Verdot	7,682	4,176	11,858	65%	\$3,949,046
Pinot Noir	11,036	2,665	13,701	81%	\$9,348,313
Ruby Cabernet	789	817	1,605	49%	\$373,756
Sangiovese	618	617	1,235	50%	\$1,276,802
Shiraz	150,412	62,081	212,493	71%	\$154,154,326
Tempranillo	847	511	1,358	62%	\$1,483,804
Zinfandel	53	12	64	82%	\$67,753
Total Red winegrapes	299,056	130,926	429,982	70%	\$285,812,086

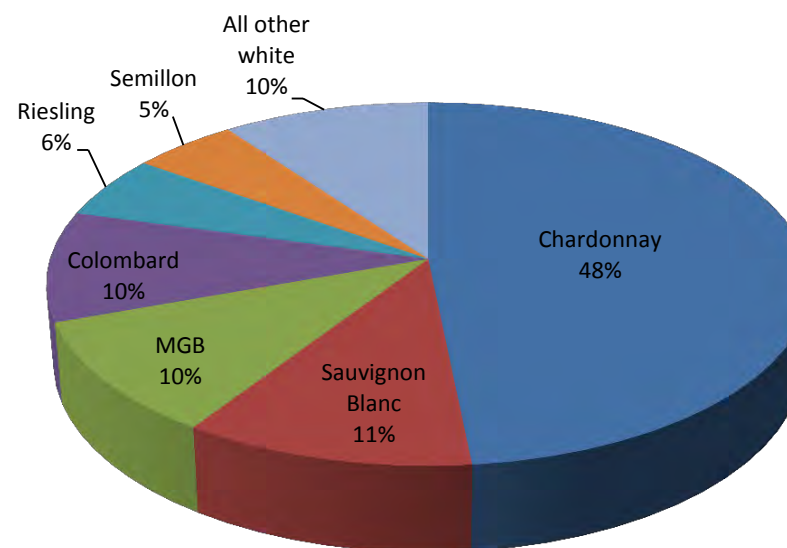


State summary

Vintage summary by variety 2014

White winegrapes

Variety	Tonnes purchased	Winery grown fruit	Total crushed	% purchased	Est total value of crush
White winegrapes					
Chardonnay	115,994	17,607	133,600	87%	\$39,676,707
Colombard	23,813	3,270	27,083	88%	\$5,332,822
Marsanne	102	89	191	53%	\$147,583
Muscat A Petit Grains Blanc	3,995	1,015	5,010	80%	\$1,709,984
Muscat Gordo Blanco	25,047	3,172	28,219	89%	\$7,923,927
Other white	3,006	1,695	4,701	64%	\$1,517,034
Pinot Gris	5,255	1,613	6,868	77%	\$5,927,149
Riesling	7,900	7,528	15,428	51%	\$13,150,973
Roussanne	29	57	86	34%	\$128,230
Sauvignon Blanc	22,356	7,592	29,949	75%	\$18,015,354
Semillon	7,902	6,158	14,060	56%	\$5,188,658
Sultana	200	0	200	100%	\$38,019
Traminer	2,346	1,289	3,635	65%	\$1,579,293
Verdelho	1,889	309	2,198	86%	\$710,677
Vermentino	653	444	1,097	60%	\$646,959
Viognier	2,612	1,098	3,710	70%	\$2,043,877
Total White winegrapes	223,098	52,936	276,035	81%	\$103,737,246
Grand Total All winegrapes	522,154	183,862	706,017	74%	\$389,549,333



There is an estimated non-response rate of 2.0% across the state.

Note: The "estimated total value of crush" is the value estimated from the tonnage and price by each variety from all regions.

State summary

Current plantings by variety and year planted

Variety	Current area in hectares					Total area	% planted in 2013
	Pre-2011	2011	2012	2013			
White winegrapes							
Chardonnay	9,648	5	20	11	9,684	0%	
Riesling	2,776	8	4	3	2,791	0%	
Sauvignon Blanc	2,564	20	19	3	2,608	0%	
Semillon	1,233	1	2	0	1,235	0%	
Muscat Gordo Blanco	1,000	18	42	6	1,066	1%	
Pinot Gris	925	6	13	3	947	0%	
Colombard	833	0	0	0	833	0%	
Viognier	481	1	0	0	482	0%	
Traminer (Gewurztraminer)	263	0	2	2	266	1%	
Muscat A Petit Grains Blanc (White Frontignac)	207	6	7	4	223	2%	
Verdelho	213	0	0	0	213	0%	
Sultana	166	2	1	0	170	0%	
Chenin Blanc	142	2	0	0	143	0%	
Doradillo	78	0	0	0	78	0%	
Vermentino	41	10	2	0	53	0%	
Savagnin	50	0	0	0	50	0%	
Fiano	27	10	5	1	43	3%	
Muscadelle (Tokay)	31	0	0	0	31	0%	
Palomino	30	0	0	0	30	0%	
Marsanne	28	0	1	1	30	3%	
Roussanne	22	2	0	0	25	0%	
Pedro Ximenes	25	0	0	0	25	0%	
Trebbiano	24	0	0	0	24	0%	
Other White	101	18	7	5	131	4%	
Total white varieties	20,907	108	125	39	21,181	0%	

State summary

Current plantings by variety and year planted

Variety	Current area in hectares					% planted in 2013
	Pre-2011	2011	2012	2013	Total area	
Red winegrapes						
Shiraz	25,458	136	233	250	26,078	1%
Cabernet Sauvignon	16,544	85	182	168	16,979	1%
Merlot	4,144	5	14	15	4,179	0%
Grenache	1,762	9	8	2	1,782	0%
Pinot Noir	1,633	22	8	7	1,670	0%
Petit Verdot	727	0	12	0	739	0%
Mataro (Mourvedre)	644	7	16	12	679	2%
Malbec	227	17	84	7	335	2%
Tempranillo	261	27	13	8	309	3%
Sangiovese	207	6	1	0	214	0%
Cabernet Franc	180	1	4	1	186	0%
Ruby Cabernet	156	0	0	0	156	0%
Nebbiolo	44	1	2	0	48	0%
Durif (Petite Sirah)	32	0	3	3	38	7%
Touriga	29	5	1	0	35	0%
Meunier (Pinot Meunier)	35	1	0	0	35	0%
Barbera	29	1	2	1	33	3%
Zinfandel	32	1	0	0	32	0%
Montepulciano	17	10	2	2	32	7%
Sagrantino	10	1	0	0	11	0%
Other Red	198	12	31	20	261	8%
Total red varieties	52,370	348	618	496	53,831	1%
Unknown variety	929	0	0	0	929	0%
Rootstock	36	0	2	0	37	0%
Germplasm	4	0	0	0	4	0%
Multi-purpose red	67	0	0	0	67	0%
Multi-purpose white	31	0	1	0	33	0%
Table grapes - red	44	0	0	0	45	1%
Table grapes - white	25	2	2	0	29	0%
Total all varieties	74,413	458	748	536	76,156	1%

State summary

Current plantings by region and year planted

Zone	Region	Current area in hectares					Total area	% planted in 2013	% of state plantings
		Pre-2011	2011	2012	2013				
Barossa	Barossa Valley	10,677	129	151	152	11,110	1%	15%	
	Barossa zone - other	236	0	0	0	236	0%	0%	
	Eden Valley	2,202	17	28	16	2,264	1%	3%	
	Total for Barossa	13,116	146	179	169	13,609	1%	18%	
Fleurieu	Currency Creek	949	8	3	0	960	0%	1%	
	Fleurieu zone - other	302	0	9	4	316	1%	0%	
	Kangaroo Island	140	0	0	0	140	0%	0%	
	Langhorne Creek	5,790	23	45	26	5,883	0%	8%	
	McLaren Vale	7,198	66	95	63	7,422	1%	10%	
	Southern Fleurieu	501	0	4	6	510	1%	1%	
	Total for Fleurieu	14,880	97	155	98	15,230	1%	20%	
Limestone Coast	Bordertown	1,251	3	0	0	1,254	0%	2%	
	Coonawarra	5,487	31	56	30	5,603	1%	7%	
	Limestone Coast zone - other	596	2	0	0	598	0%	1%	
	Mount Benson	504	0	0	0	504	0%	1%	
	Mount Gambier	292	0	0	0	292	0%	0%	
	Padthaway	3,979	6	70	36	4,092	1%	5%	
	Robe	751	0	5	3	759	0%	1%	
	Wrattonbully	2,663	8	2	6	2,679	0%	4%	
	Total for Limestone Coast	15,524	50	132	75	15,782	0%	21%	
Lower Murray	Riverland	20,203	102	169	101	20,575	0%	27%	
	Lower Murray Zone - Other	442	0	2	0	443	0%	1%	
	Total for Lower Murray	20,644	102	171	101	21,018	0%	28%	
Mount Lofty Ranges	Adelaide Hills	3,797	42	36	29	3,904	1%	5%	
	Adelaide Plains	644	0	0	2	646	0%	1%	
	Clare Valley	5,206	14	70	49	5,339	1%	7%	
	Mount Lofty Ranges zone - other	324	6	6	12	349	4%	0%	
	Total for Mount Lofty Ranges	9,971	63	111	93	10,238	1%	13%	
Far North	Southern Flinders Ranges	202	0	0	0	202	0%	0%	
The Peninsulas		76	0	0	0	77	0%	0%	
Total for All GIs		74,413	458	748	536	76,156	1%	100%	

State summary

Number of grower by region and property size 2014

Property size in hectares

GI region	< 10		10 - 24 ha		25 - 49 ha		50 - 99 ha		100+ ha		Total	
	Area (ha)	# of growers	Area (ha)	# of growers	Area (ha)	# of growers	Area (ha)	# of growers	Area (ha)	# of growers	Area (ha)	# of growers
Barossa												
Barossa Valley	1,320	337	2,423	152	2,469	73	1,323	20	3,580	13	11,116	595
Eden Valley	395	94	459	32	310	10	520	7	580	2	2,264	145
Barossa Zone - Other	15	3	12	1	0	0	84	1	126	1	236	6
Fleurieu												
Currency Creek	63	13	149	10	192	5	0	0	556	2	960	30
Kangaroo Island	117	20	23	2	0	0	0	0	0	0	140	22
Langhorne Creek	111	22	353	21	958	27	1,172	17	3,289	12	5,883	99
McLaren Vale	1,528	362	1,722	110	1,359	42	1,443	20	1,386	7	7,438	541
Southern Fleurieu	112	35	103	8	228	6	68	1	0	0	510	50
Fleurieu Zone - Other	22	7	60	4	0	0	234	3	0	0	316	14
Limestone Coast												
Bordertown	0	0	0	0	39	1	0	0	1,215	5	1,254	6
Coonawarra	288	53	462	31	704	20	943	14	3,206	11	5,603	129
Mount Benson	28	5	78	5	155	5	114	2	129	1	504	18
Mount Gambier	56	14	36	3	106	3	94	1	0	0	292	21
Padthaway	9	1	56	4	316	9	637	9	3,074	12	4,092	35
Robe	18	2	83	4	81	2	210	3	368	2	759	13
Wrattonbully	72	13	380	22	512	14	330	4	1,386	6	2,679	59
Limestone Coast Zone - Other	62	14	30	2	59	2	202	3	244	2	598	23
Lower Murray												
Riverland	2,831	570	4,503	290	3,109	92	2,029	28	8,111	38	20,583	1,018
Lower Murray Zone - Other	70	17	159	9	214	7	0	0	0	0	443	33
Mount Lofty Ranges												
Adelaide Hills	732	189	979	59	983	28	931	13	278	2	3,904	291
Adelaide Plains	141	46	109	9	81	2	140	2	175	1	646	60
Clare Valley	688	179	774	46	736	22	1,087	15	2,054	10	5,339	272
Mount Lofty Ranges Zone - Other	118	32	32	2	108	3	93	1	0	0	350	38
Southern Flinders Ranges	24	6	125	7	0	0	53	1	0	0	202	14
The Peninsulas	23	6	21	2	33	1	0	0	0	0	77	9
Total	8,839	2,040	13,132	835	12,753	374	11,705	165	29,758	127		

Note - grapegrowers can have vineyards in multiple regions.

Grand Total for the State of SA

76,187 3,443