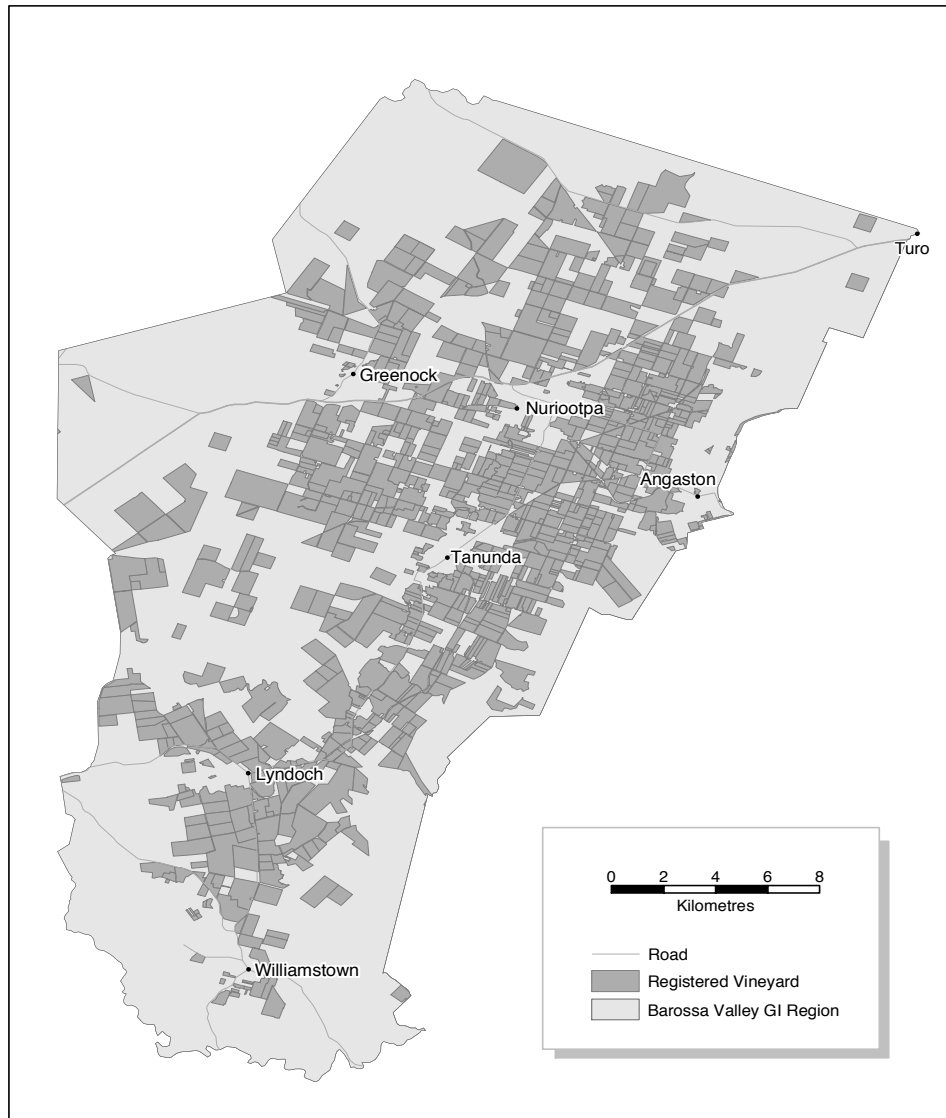


BAROSSA VALLEY VINTAGE OVERVIEW



Vintage report

Vintage 2005 was largely trouble free in the Barossa Valley.

The summer period was extremely mild with temperatures approximately two degrees below average and humidities slight above average. This allowed all vineyards to grow under low stress conditions. In response irrigation timing and volumes were in most cases quite minimal. Disease incidence was extremely low throughout the entire growing season apart from some small outbreaks of light brown apple moth in some of the cooler areas of the Barossa Valley Floor.

During the mid part of January some of the premium Shiraz vineyards were bunch thinned in an attempt to bring maturity forward into the earlier part of the season. These programs were generally effective.

The month of February was quite dry and mild, with rainfall approximately 10mm below average. Vintage began slightly later than normal, with the earlier picked varieties being Chardonnay and Semillon. Shiraz began to be harvested in earnest at the beginning of March. In general grapes on the Barossa Floor were harvested slightly later than normal due to the milder season. Whites maintained their acidities into higher maturities and many reds did not achieve flavour ripeness until they were at least 14° Baumé, with more subtle berry flavours produced as a result.

Robin Nettelbeck

Phylloxera and Grape Industry Board

Overview of vintage statistics

The Barossa Valley produced a record 84,906 tonnes in 2005 – 20% more than the 2004 record harvest, and 20,000 tonnes more than McLaren Vale, which crushed slightly more last year. The average purchase value for most of the major varieties dropped by between \$100 and \$200 per tonne, but the total income to growers increased by around \$4 million, and the estimated total value of grapes from the region increased from \$86 million in 2004 to \$92 million.

The preferred intake for 2006 is 72,000 tonnes – considerably less than was crushed this year, but 6,000t more than last year's forecast for 2006. The preferred intake increases to around 79,000t by 2010, with Shiraz accounting for nearly half of the total region's crush.

There were over 200 hectares of new plantings in the Barossa in 2004, half in Shiraz.

Based on the current vineyard area in the region, and using estimated yield figures of 9 t/ha for reds and 10 t/ha for whites, the estimated production for the region in 2008 is around 90,000 tonnes. This is 14,000 tonnes higher than the preferred intake from the region for that year. All of the estimated surplus is in red varieties, with large surpluses of Cabernet Sauvignon (5,800t), Grenache (1000t) and Shiraz (6,300t) expected. On the other hand, there is an expected shortfall of 1700t in Semillon.

BAROSSA VALLEY* TONNES CRUSHED BY VARIETY - VINTAGE 2005

Table 4.1

Variety	Total winery grown	Total other growers	Total crushed	Total preferred	Tonnes from other growers as % of total	% of demand supplied	Number of wineries reporting tonnages (>0) for		
							Own	Other	Preferred
RED									
Barbera	10	0	10	0	0%		1	0	0
Cabernet Franc	109	155	265	190	59%	140%	7	6	9
Cabernet Sauvignon	2,260	7,373	9,633	7,612	77%	127%	30	32	45
Dolcetto	9	0	9	10	0%	90%	1	0	1
Grenache	1,610	4,690	6,300	5,321	74%	118%	23	32	37
Malbec	82	50	132	125	38%	105%	7	3	7
Mataro	312	547	859	894	64%	96%	12	18	22
Merlot	686	2,604	3,290	2,934	79%	112%	17	23	30
Meunier (Pinot Meunier)	1	0	1	1	0%	70%	1	0	1
Nebbiolo	83	3	85	74	3%	115%	2	1	1
Other red	52	145	196	175	74%	112%	8	14	15
Petit Verdot	34	110	144	120	77%	119%	4	7	9
Pinot Noir	89	672	760	403	88%	189%	6	10	10
Sangiovese	20	163	184	162	89%	113%	2	4	2
Shiraz	7,202	29,364	36,566	29,322	80%	125%	40	48	62
Tempranillo	4	185	189	214	98%	88%	1	5	6
Zinfandel	17	99	116	115	86%	101%	4	7	11
Total RED	12,578	46,160	58,738	47,673	79%	123%			
<i>% of grand total</i>			<i>69%</i>	<i>67%</i>					
WHITE									
Chardonnay	1,274	5,817	7,091	7,226	82%	98%	15	18	23
Chenin Blanc	18	540	559	501	97%	111%	2	9	8
Colombard	0	14	14	15	100%	95%	0	1	1
Marsanne	21	6	27	27	22%	101%	3	1	3
Muscat Blanc	108	365	473	389	77%	122%	4	8	10
Other white	220	199	419	269	48%	156%	7	14	13
Riesling	1,297	3,082	4,379	3,570	70%	123%	14	20	24
Sauvignon Blanc	370	909	1,280	1,070	71%	120%	5	9	9
Semillon	1,297	10,278	11,575	10,007	89%	116%	17	24	31
Traminer	13	79	92	58	86%	158%	1	2	2
Verdelho	0	47	47	47	100%	100%	0	1	1
Viognier	19	193	211	215	91%	98%	3	6	9
Total WHITE	4,637	21,531	26,168	23,396	82%	112%			
<i>% of grand total</i>			<i>31%</i>	<i>33%</i>					
Grand Total	17,215	67,690	84,906	71,069	80%	119%			

* All tables also include tonnages from Barossa zone - other (1700 tonnes)



BAROSSA VALLEY CROP VALUE DATA (RED VARIETIES) - VINTAGE 2005

Table 4.2

Variety	Grower grown (t)	Total crushed (t)	Estimated total value purchased grapes	Estimated total value total grapes	Lowest price ¹	Highest price	Calc average purchase value per tonne	qualifier ²
RED								
Barbera	0	10	\$0	\$12,507			\$0	
Cabernet Franc	155	265	\$132,638	\$226,035	\$400	\$900	\$854	100%
Cabernet Sauvignon	7,373	9,633	\$7,047,576	\$9,208,065	\$200	\$5,730	\$956	93%
Dolcetto	0	9	\$0	\$11,370			\$0	
Grenache	4,690	6,300	\$5,006,215	\$6,725,101	\$200	\$4,300	\$1,067	96%
Malbec	50	132	\$54,966	\$144,448	\$972	\$1,300	\$1,097	100%
Mataro	547	859	\$753,663	\$1,183,537	\$800	\$4,600	\$1,378	99%
Merlot	2,604	3,290	\$2,604,318	\$3,290,307	\$200	\$3,150	\$1,000	99%
Meunier (Pinot Meunier)	0	1	\$0	\$884			\$0	
Nebbiolo	3	85	\$3,124	\$95,282			\$1,116	100%
Other red	145	196	\$127,142	\$184,183	\$800	\$3,000	\$880	99%
Petit Verdot	110	144	\$86,617	\$113,081	\$500	\$2,500	\$788	96%
Pinot Noir	672	760	\$455,470	\$515,516	\$300	\$2,000	\$678	100%
Sangiovese	163	184	\$188,866	\$212,342	\$500	\$1,600	\$1,155	100%
Shiraz	29,364	36,566	\$38,300,149	\$47,693,841	\$150	\$10,000	\$1,304	94%
Tempranillo	185	189	\$234,920	\$240,013	\$500	\$2,500	\$1,273	100%
Zinfandel	99	116	\$144,992	\$169,249	\$900	\$2,500	\$1,461	100%
Total RED	46,160	58,738	\$55,140,657	\$70,025,761				

¹ The absence of lowest and highest prices means that fewer than three wineries supplied pricing data for each variety.

² This indicates the percentage of purchased fruit for which pricing information was supplied.

BAROSSA VALLEY CROP VALUE DATA (WHITE VARIETIES) - VINTAGE 2005

Table 4.3

Variety	Grower grown (t)	Total crushed (t)	Estimated total value purchased grapes	Estimated total value total grapes	Lowest price ¹	Highest price	Calc average purchase value per tonne	qualifie ²
WHITE								
Chardonnay	5,817	7,091	\$6,118,321	\$7,458,694	\$100	\$1,500	\$1,052	100%
Chenin Blanc	540	559	\$286,194	\$295,863	\$250	\$1,000	\$530	100%
Colombard	14	14	\$8,818	\$8,818			\$621	100%
Marsanne	6	27	\$7,200	\$32,880			\$1,200	100%
Muscat Blanc	365	473	\$243,715	\$315,775	\$500	\$1,200	\$667	100%
Other white	199	416	\$97,713	\$188,692	\$200	\$1,215	\$490	100%
Riesling	3,082	4,379	\$2,723,083	\$3,868,810	\$300	\$1,800	\$883	100%
Rousanne	0	3	\$0	\$2,537			\$0	
Sauvignon Blanc	909	1,280	\$837,726	\$1,178,605	\$500	\$1,193	\$921	100%
Semillon	10,278	11,575	\$7,426,237	\$8,363,153	\$250	\$1,400	\$723	99%
Traminer	79	92	\$63,152	\$73,808			\$800	100%
Verdelho	47	47	\$41,088	\$41,088			\$873	100%
Viognier	193	211	\$309,699	\$339,416	\$850	\$2,250	\$1,606	100%
Total WHITE	21,531	26,168	\$18,162,945	\$22,168,138				
Total all varieties	67,690	84,906	\$73,303,601	\$92,193,899				

¹ The absence of lowest and highest prices means that fewer than three wineries supplied pricing data for each variety.

² This indicates the percentage of purchased fruit for which pricing information was supplied.



BAROSSA VALLEY ESTIMATED AND PREFERRED FUTURE INTAKE OF GRAPES 2006 TO 2010

Table 4.4

Variety	2006			2007			2008			2009			2010		
	estimated	preferred	qualifier ¹	estimated	preferred	qualifier	estimated	preferred	qualifier	estimated	preferred	qualifier	estimated	preferred	qualifier
RED															
Barbera	8	0	100%	10	0	100%	10	0	100%	10	0	100%	10	0	100%
Cabernet Franc	238	121	97%	245	128	97%	168	93	90%	171	96	90%	171	96	90%
Cabernet Sauvignon	9,896	7,942	99%	9,327	7,581	97%	8,354	6,850	97%	8,081	6,938	97%	7,885	6,958	97%
Dolcetto	10	10	100%	10	10	100%	10	10	100%	10	10	100%	10	10	100%
Grenache	4,927	4,749	99%	5,028	4,881	99%	5,279	5,243	99%	5,356	5,351	99%	5,459	5,456	99%
Malbec	124	106	100%	121	96	92%	93	66	92%	93	66	92%	93	66	92%
Mataro	1,059	1,093	99%	1,093	1,133	99%	1,162	1,205	99%	1,178	1,216	99%	1,179	1,231	98%
Merlot	3,010	2,832	96%	3,218	3,093	96%	3,859	3,763	94%	3,922	3,863	93%	3,947	3,863	93%
Nebbiolo	84	74	97%	84	74	97%	84	74	97%	84	74	97%	84	74	97%
Other red	170	148	97%	170	148	97%	152	130	97%	132	110	97%	132	110	97%
Petit Verdot	185	161	99%	185	161	99%	159	135	99%	159	135	99%	159	135	99%
Pinot Noir	556	305	99%	511	255	99%	453	196	99%	391	197	90%	390	196	90%
Sangiovese	137	127	94%	116	106	94%	116	106	94%	116	106	94%	116	106	94%
Shiraz	34,291	31,511	99%	36,029	33,559	99%	37,672	36,276	98%	36,934	36,943	98%	36,761	37,464	98%
Tempranillo	223	222	97%	228	222	97%	232	222	97%	232	222	97%	232	222	97%
Zinfandel	98	91	98%	100	93	98%	85	93	98%	87	95	98%	71	95	73%
Total RED	55,014	49,493		56,474	51,540		57,887	54,462		56,955	55,422		56,698	56,082	
WHITE															
Chardonnay	6,976	7,342	99%	6,833	7,250	96%	6,413	6,939	95%	6,272	7,261	95%	6,308	7,321	95%
Chenin Blanc	404	412	95%	373	381	95%	263	283	66%	263	283	66%	263	283	66%
Colombard	15	15	100%	15	15	100%	15	15	100%	0	0	0%	0	0	0%
Marsanne	27	27	100%	27	27	100%	27	27	100%	27	27	100%	27	27	100%
Muscat Blanc	456	386	100%	456	386	100%	456	386	100%	439	386	100%	439	386	100%
Other white	262	207	94%	265	205	94%	237	207	81%	237	209	81%	237	212	81%
Riesling	3,706	3,304	100%	4,099	3,870	100%	4,146	3,905	100%	4,263	4,127	97%	4,276	4,151	96%
Sauvignon Blanc	1,124	917	100%	1,125	928	100%	1,042	861	97%	1,077	863	97%	1,107	863	97%
Semillon	10,104	9,507	100%	8,464	9,491	100%	7,477	8,719	100%	7,443	9,194	100%	7,375	9,194	97%
Traminer	92	54	100%	92	54	100%	67	29	100%	52	29	100%	52	29	100%
Verdelho	48	48	100%	51	51	100%	53	53	100%	53	53	100%	53	53	100%
Viognier	338	362	96%	440	448	100%	452	456	100%	459	464	100%	466	467	100%
Total WHITE	23,552	22,581		22,240	23,106		20,648	21,880		20,585	22,896		20,603	22,985	
Total all varieties	78,566	72,074		78,714	74,646		78,535	76,342		77,539	78,317		77,301	79,068	

¹ This indicates the percentage of crushed fruit in the current vintage for which forecast intake data was supplied.

BAROSSA VALLEY SUPPLY AND DEMAND FORECASTS 2006 AND 2008

Table 4.5

Variety	2006					2008				
	estimated bearing area (ha) ¹	estimated production (tonnes) ²	preferred intake (tonnes) ³	Difference (tonnes)	% difference	estimated bearing area (ha) ¹	estimated production (tonnes) ²	preferred intake (tonnes) ³	Difference (tonnes)	% difference
Cabernet Franc	40	360	121	239	66%	40	360	93	267	74%
Cabernet Sauvignon	1,397	11176	7,942	3,234	29%	1,404	11232	6,850	4,383	39%
Grenache	670	6030	4,749	1,281	21%	695	6255	5,243	1,012	16%
Malbec	20	180	106	74	41%	23	207	66	141	68%
Mataro	158	1422	1,093	329	23%	165	1485	1,205	280	19%
Merlot	318	2862	2,832	30	1%	380	3420	3,763	-343	-10%
Nebbiolo	11	99	74	25	25%	11	99	74	25	25%
Other red	34	306	249	57	19%	61	549	233	316	58%
Petit Verdot	24	216	161	55	26%	26	234	135	99	42%
Pinot Noir	65	585	305	280	48%	65	585	196	389	66%
Sangiovese	17	153	127	26	17%	19	171	106	65	38%
Shiraz	4,355	39195	31,511	7,684	20%	4,731	42579	36,276	6,303	15%
Tempranillo	31	279	222	57	20%	34	306	222	84	27%
Red Total	7,140	64260	49,493	14,767	23%	7,654	68886	54,462	14,424	21%
Chardonnay	553	5530	7,342	-1,812	-33%	647	6470	6,939	-469	-7%
Chenin Blanc	44	440	412	28	6%	44	440	283	157	36%
Muscat Blanc	45	450	386	64	14%	46	460	386	74	16%
Other white	101	1010	249	761	75%	111	1110	249	861	78%
Riesling	372	3720	3,304	416	11%	418	4180	3,905	275	7%
Sauvignon Blanc	115	1150	917	233	20%	116	1160	861	299	26%
Semillon	692	6920	9,507	-2,587	-37%	699	6990	8,719	-1,729	-25%
Traminer	8	80	54	26	33%	8	80	29	51	64%
Verdelho	5	50	48	2	4%	5	50	53	-3	-6%
Viognier	39	390	362	28	7%	43	430	456	-26	-6%
White Total	1,974	19740	22,581	-2,841	-14%	2,137	21370	21,880	-510	-2%
Grand Total	9,114	84000	72,074	11,926	14%	9,791	90256	76,342	13,914	15%

This table compares estimated future production (supply) - based on planting data - with estimated future demand (preferred intake). This gives a better indication of possible shortfalls and surpluses than comparing estimated with preferred intake, as estimated intake does not necessarily account for all production of a given variety.

(1) Planting data derived from PGIB vineyard register. Bearing area includes plantings more than three years old.

(2) Bearing area multiplied by yield estimate of 9t/ha for reds (8t/ha for Cabernet Sauvignon) and 10t/ha for whites.

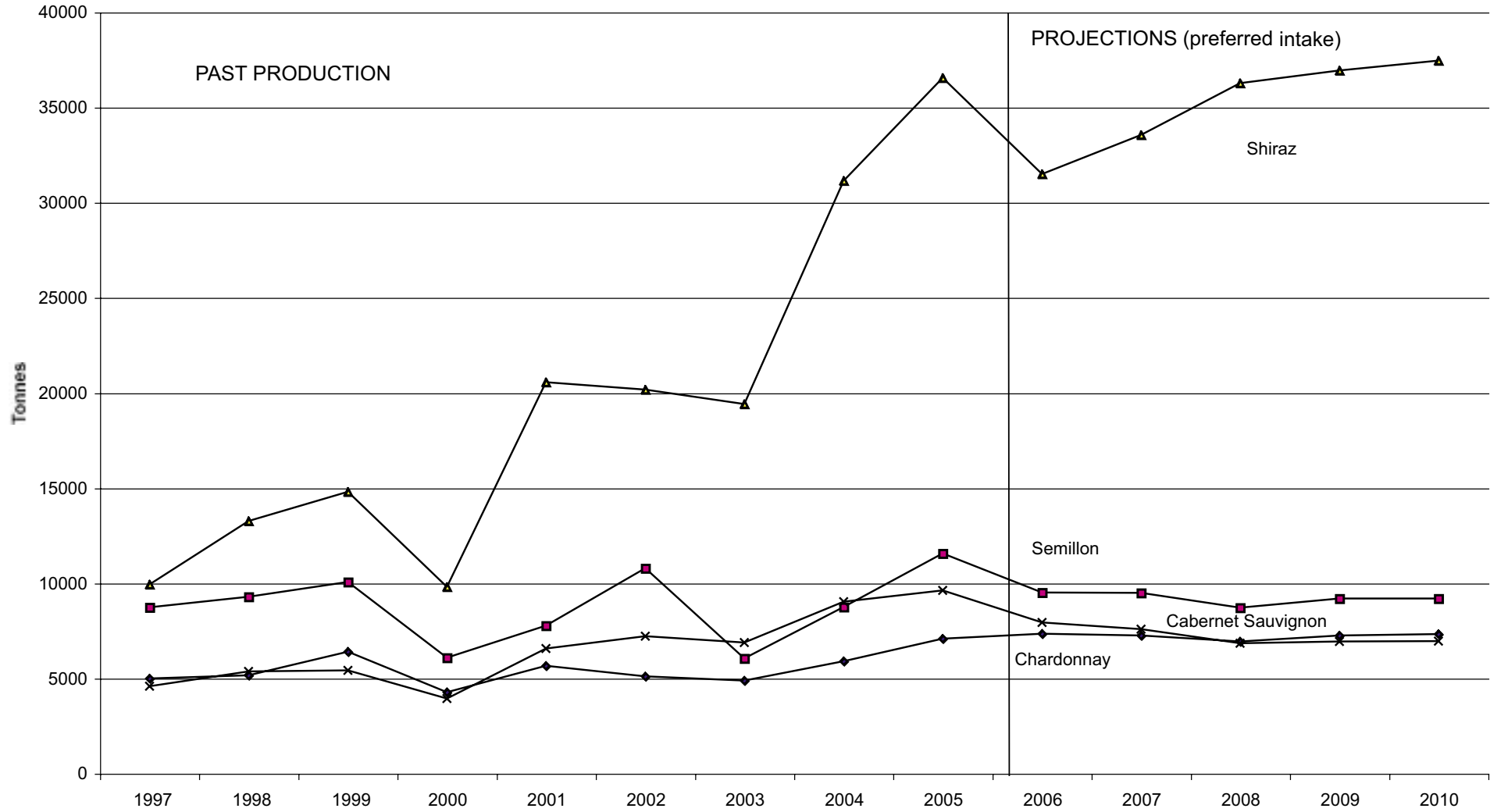
(3) Taken from the Utilisation and Pricing survey (see previous page).



BAROSSA VALLEY PAST PRODUCTION AND PROJECTIONS FOR MAJOR VARIETIES 1997 - 2010

Figure 4.1

Past production and projections (major varieties)



BAROSSA VALLEY* CURRENT PLANTINGS BY VARIETY AND YEAR PLANTED

Table 4.6

Variety	Current area in hectares by year planted						Total area	% planted in 2004
	Pre-2000	2000	2001	2002	2003	2004		
RED WINEGRAPES								
CABERNET FRANC	37	3	0	0	0	0	40	0%
CABERNET SAUVIGNON	988	147	192	69	7	0	1404	0%
GRENACHE	596	23	25	26	24	1	695	0%
MALBEC	17	0	3	0	0	3	23	12%
MATARO (MOUVEDRE)	108	17	28	5	4	3	165	2%
MERLOT	175	31	61	50	59	3	380	1%
NEBBIOLO	6	5	0	0	0	0	11	0%
PETIT VERDOT	10	1	13	0	0	2	26	7%
PINOT NOIR	63	1	0	0	0	0	65	0%
SANGIOVESE	12	5	0	0	0	2	19	12%
SHIRAZ	3047	370	477	461	271	105	4731	2%
TEMPRANILLO	0	2	18	11	3	0	34	1%
OTHER RED	34	9	4	7	2	3	61	5%
TOTAL RED WINEGRAPES	5094	614	821	629	371	124	7654	2%
WHITE WINEGRAPES								
CHARDONNAY	506	10	8	30	52	42	647	6%
CHENIN BLANC	44	0	0	0	0	0	44	1%
MUSCAT BLANC	45	0	0	0	1	1	46	1%
RIESLING	326	11	6	28	20	26	418	6%
SAUVIGNON BLANC	90	0	0	25	0	1	116	1%
SEMILLON	680	4	5	3	0	7	699	1%
VERDELHO	4	1	0	0	0	0	5	0%
VIOGNIER	2	7	18	11	2	2	43	5%
OTHER WHITE	109	0	2	4	2	3	119	3%
TOTAL WHITE WINEGRAPES	1806	33	39	101	77	81	2137	4%
TOTAL ALL VARIETIES	6901	647	860	730	448	205	9791	2%

* Also includes plantings in Barossa zone - other (105 hectares)

